

# Tim Shaw – Independent

## My Community Network September 2019

### Protect our Green Belt



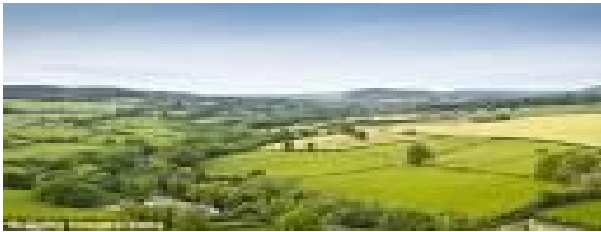
**Tonbridge and Malling Borough  
Councillor for the Borough Green  
and Long Mill Ward**

[timshaw1@btinternet.com](mailto:timshaw1@btinternet.com)

[www.facebook.com/timshawkent](https://www.facebook.com/timshawkent)

[www.timshaw.info](http://www.timshaw.info)

[www.landscapesforlife.org.uk](http://www.landscapesforlife.org.uk)



**Focus** – *The Metropolitan Green Belt is a statutory green belt around London. It comprises parts of Greater London and the six adjoining counties, parts of two of the three districts of the small county of Bedfordshire and less than 0.1% of Sussex. Green belt is good positive planning. It stops urban sprawl and encourages the vital regeneration of our largest cities. Sprawl has all kinds of negative impacts, including loss of farmland and wildlife, increased car use and neglect of older towns and cities.*

<https://petition.parliament.uk/petitions/274179>

Dear friends welcome to the September edition of **My Community Network** for keeping you informed of issues that I am representing you on at TMBC. I am a local family man, born and bred in Borough Green. Business man, ex - school governor, Parish & T&MB councillor. My mission includes building a network of support in my political work for improving our community and to represent our people. *This month's edition focuses on Protection of our Green Belt.*

**Fact** – West Kent is under real threat from developers looking to concrete over our Green Belt to enable mass housing. Green belt was proposed in 1935 by the Greater London Regional Planning Committee to provide a reserve supply of public open spaces and of recreational areas to establish a green belt or girdle of open space. Green belt is now just 13% of England.



facebook

twitter

LinkedIn