

Tim Shaw – Independent

My Community Network

February 2016

Building developments – ‘Call for Sites’



**Tonbridge and Malling Borough
Councillor for the Borough Green
and Long Mill Ward**

timshaw1@btinternet.com

www.timshaw.info

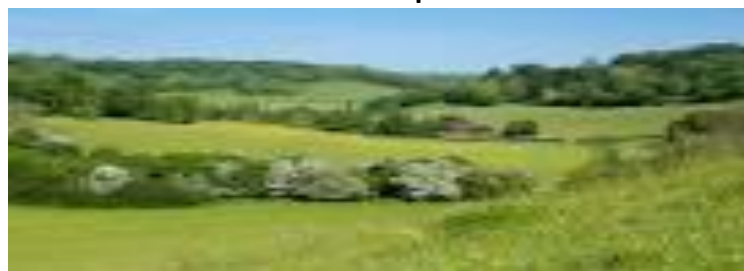
www.boroughgreen-news.com



Focus – Strategic Housing Market Assessment (SHMA) takes into account the DCLG (Govt) Housing projections of 673 new homes per annum from 2011 – 31) in T&M. The ‘Call for Sites’ process allows anyone to put land forward for building consideration. The Strategic Housing Land Availability Assessment (SHLAA) then lists the ‘potential’ land / sites for meeting the 673 needs as well as sites for employment and other uses. To be included in the SHLAA, sites must be able to meet the needs of the T&MBC Local Plan 2011-31 thus forms the new Local Plan. Rev 3:20

Dear friends welcome to the February edition of **My Community Network** for keeping you informed of issues that I am representing you on at TMBC. I am a local family man, born and bred in Borough Green. Business man, ex - school governor, Parish & T&MB councillor. My mission includes building a network of support in my political work for improving our community and to represent our people *This month’s edition focuses on ‘building developments – call for sites’*

Fact - Government National Planning Policies put huge development demand on Local Authorities (LA’s) such as ours in Tonbridge and Malling. LA’s are expected to strive to identify development opportunity in order to meet significant housing shortfalls and support local economic investment. National Planning Practice Guidance (NPPG) states LA’s must issue a ‘Call for potential sites’.



facebook

twitter

LinkedIn