

# Tim Shaw – Independent



## My Community Network September 2018

### TMBC Local Plan – Regulation 19 Consultation

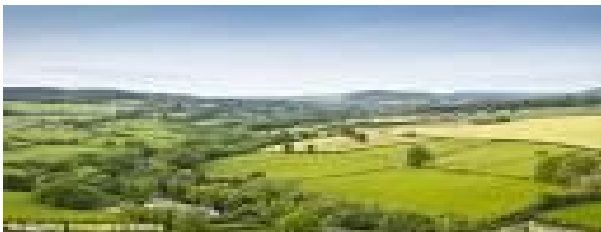
**Tonbridge and Malling Borough  
Councillor for the Borough Green  
and Long Mill Ward**

[timshaw1@btinternet.com](mailto:timshaw1@btinternet.com)

[www.facebook.com/timshawkent](http://www.facebook.com/timshawkent)

[www.timshaw.info](http://www.timshaw.info)

[Tim.shaw@tmbc.gov.uk](mailto:Tim.shaw@tmbc.gov.uk)



**Focus** – *This phase of the Reg 19 consultation process provides local communities, businesses and other interested shareholders with the opportunity to comment on the policy content of a draft Local Plan within a specific remit. The remit for public consultation relates to the ‘tests of soundness’ and also includes legal compliance, as set out in National Planning Policy Framework (NPPF). Regulation 18 explored a number of different policy options, had ‘open’ questions and a wider remit for input during the consultation phase. A 6 week period awaits us.*

Dear friends welcome to the September edition of **My Community Network** for keeping you informed of issues that I am representing you on at TMBC. I am a local family man, born and bred in Borough Green. Business man, ex - school governor, Parish & T&MB councillor. My mission includes building a network of support in my political work for improving our community and to represent our people. *This month’s edition focuses on the TMBC Local Plan adoption – Regulation 19 – the public consultation period*

**Fact** – Reference is made to the Town and Country Planning Act (Local Planning) (England) Regulations 2012 and Regulation 19 which is the second stage of the consultation process when forming a Local Plan. It represents the proposed policies for an area. We shall be given a 6 week public consultation period to write, email and submit on line our views to the proposed 3,000 mass housing estate Borough Green Garden City.



facebook

twitter

LinkedIn