

# Tim Shaw – Independent



## My Community Network

September 2016

### TMBC Local Plan 'The Way Forward'

**Tonbridge and Malling Borough  
Councillor for the Borough Green  
and Long Mill Ward**

[timshaw1@btinternet.com](mailto:timshaw1@btinternet.com)

[www.timshaw.info](http://www.timshaw.info)

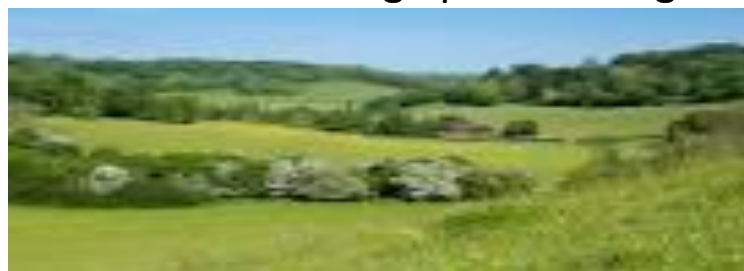
[www.boroughgreen-news.com](http://www.boroughgreen-news.com)



**Focus** – Strategic Housing Market Assessment (SHMA) took the DCLG (Govt) Housing projections of 673 new homes per annum from 2011 – 31) in T&M. The early 2016 'Call for Sites' process allowed anyone to put land forward for development consideration. Strategic Housing Land Availability Assessment (SHLAA) now lists 'potential' land / sites for meeting the 673 needs as well as sites for employment and other uses. To be included in the SHLAA, sites must be able to meet the T&MBC criteria to be included in the new 2031 TMBC Local Plan. The Way Forward as they say. *Isaiah 25*

Dear friends welcome to the September edition of **My Community Network** for keeping you informed of issues that I am representing you on at TMBC. I am a local family man, born and bred in Borough Green. Business man, ex - school governor, Parish & T&MB councillor. My mission includes building a network of support in my political work for improving our community and to represent our people. *This month's edition focuses on the 'TMBC Local Plan'...the next stage.*

**Fact** – My 'February 2016 bulletin' covered the National Planning Practice Guidance (NPPG) of TMBC issue of a 'Call for potential sites'. We now have the next phase of their TMBC Local Plan – the '*Potential Development Strategy*' of those 225 potential sites initially put forward & now assessed as real potential sites in support of TMBC's housing needs up to 2031. The 2<sup>nd</sup> stage plan making!



facebook

twitter

LinkedIn